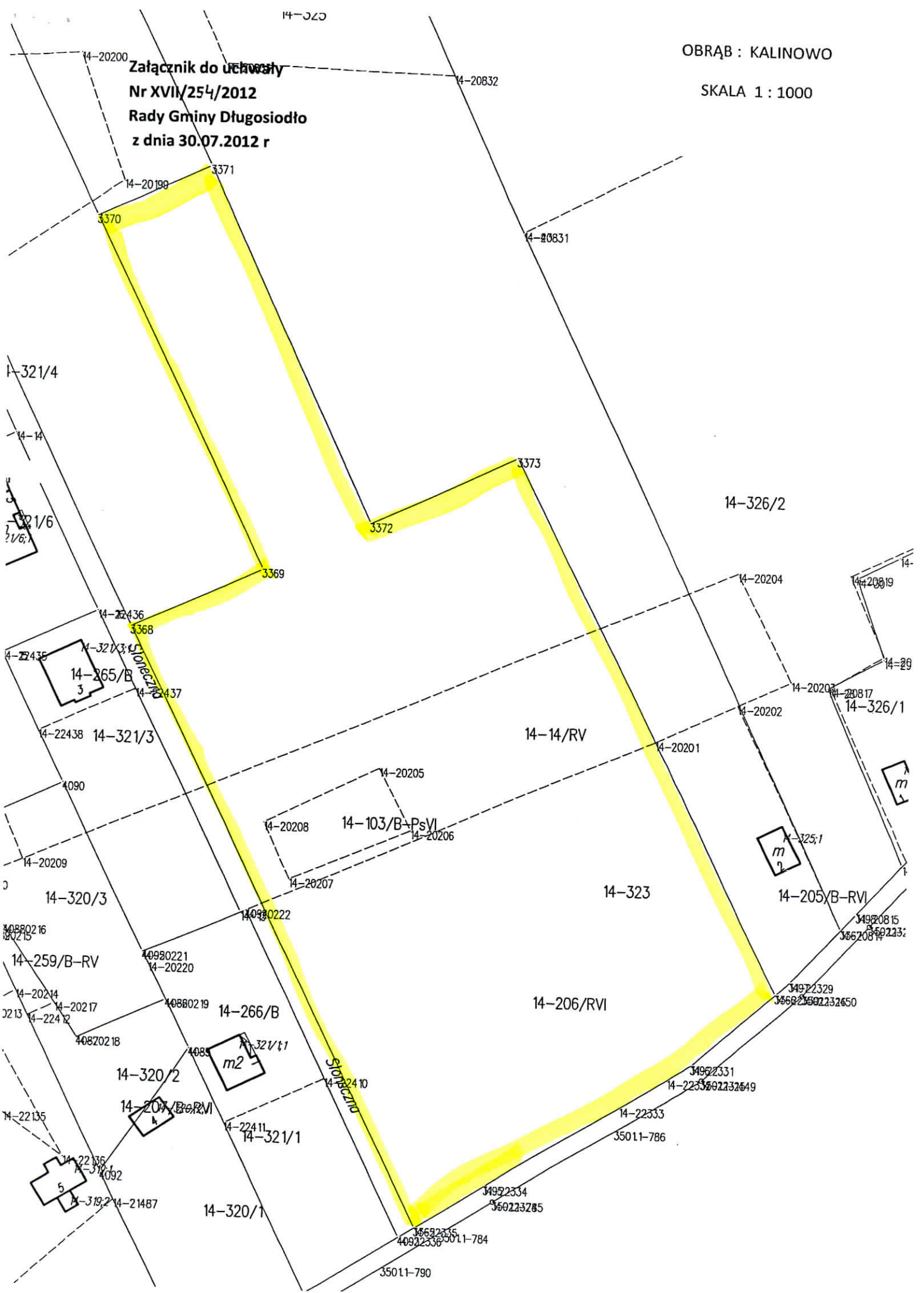


**Załącznik do uchwały
Nr XVII/254/2012
Rady Gminy Długosiodło
z dnia 30.07.2012 r**

OBRĄB : KALINOWO

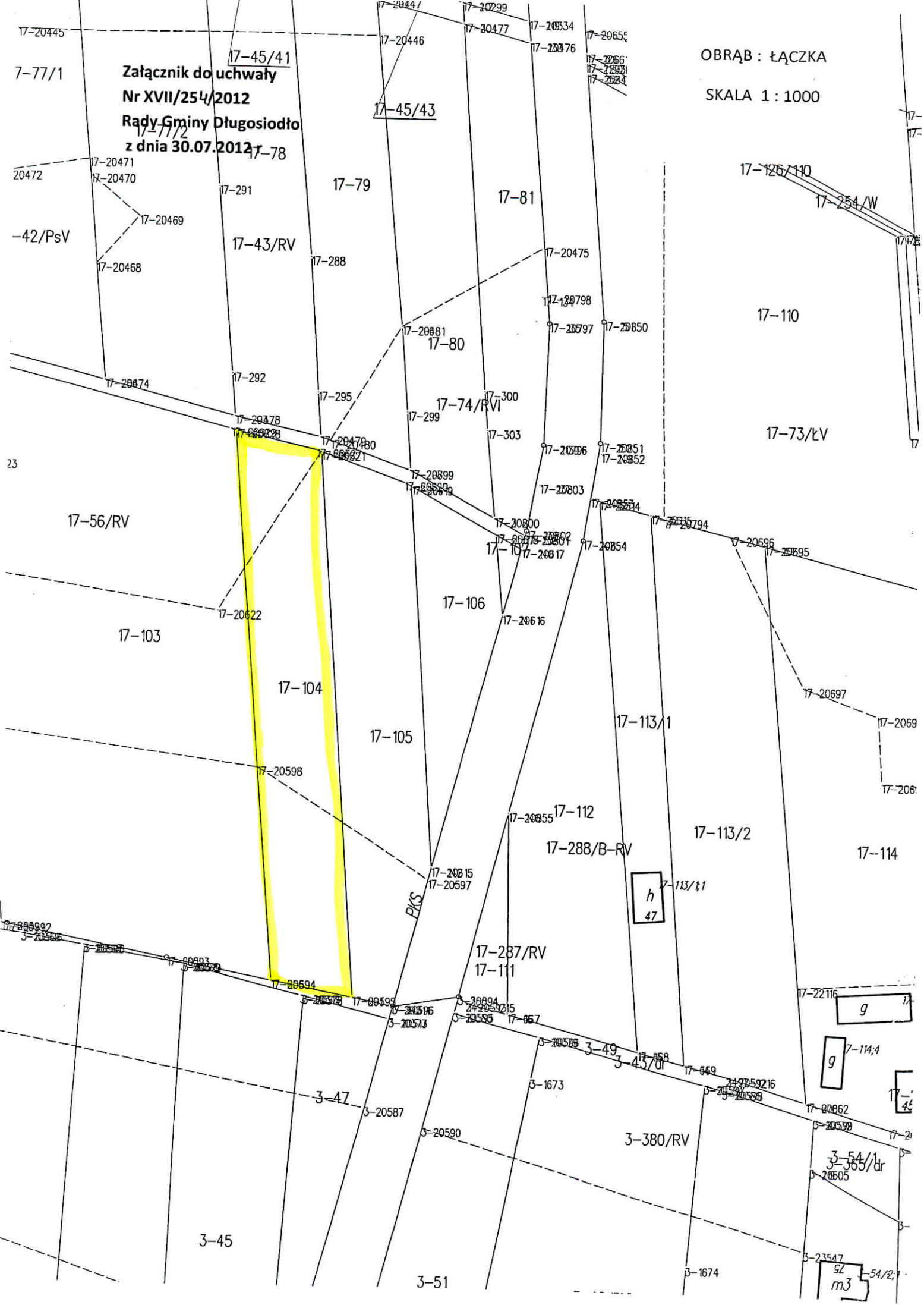
SKALA 1 : 1000



OBRĄB : ŁĄCZKA

SKALA 1 : 1000

Załącznik do uchwały
Nr XVII/254/2012
Rady Gminy Długosiodło
z dnia 30.07.2012r



7-77/1

20472

-42/PsV

23

17-56/RV

17-103

17-104

17-105

17-106

17-288/B-RV

17-287/RV
17-111

3-47

3-45

3-51

3-380/RV

3-1674

3-54/1
3-365/dr
3-28505

3-54/2
m3

RKS

h
47

g

g
7-114;4

47

54/2

17-125/110

17-254/W

17-110

17-73/LV

17-113/1

17-113/2

17-114

17-2216

17-114;4

17-2

54/2

17-20471
17-20470

17-20469
17-20468

17-292
17-293
17-294
17-295
17-296
17-297
17-298
17-299

17-20522

17-20598

17-20592
17-20593
17-20594
17-20595
17-20596
17-20597
17-20598
17-20599
17-20600
17-20601
17-20602
17-20603
17-20604
17-20605
17-20606
17-20607
17-20608
17-20609
17-20610
17-20611
17-20612
17-20613
17-20614
17-20615
17-20616
17-20617
17-20618
17-20619
17-20620
17-20621
17-20622
17-20623
17-20624
17-20625
17-20626
17-20627
17-20628
17-20629
17-20630
17-20631
17-20632
17-20633
17-20634
17-20635
17-20636
17-20637
17-20638
17-20639
17-20640
17-20641
17-20642
17-20643
17-20644
17-20645
17-20646
17-20647
17-20648
17-20649
17-20650
17-20651
17-20652
17-20653
17-20654
17-20655
17-20656
17-20657
17-20658
17-20659
17-20660
17-20661
17-20662
17-20663
17-20664
17-20665
17-20666
17-20667
17-20668
17-20669
17-20670
17-20671
17-20672
17-20673
17-20674
17-20675
17-20676
17-20677
17-20678
17-20679
17-20680
17-20681
17-20682
17-20683
17-20684
17-20685
17-20686
17-20687
17-20688
17-20689
17-20690
17-20691
17-20692
17-20693
17-20694
17-20695
17-20696
17-20697
17-20698
17-20699
17-20700

17-20587
17-20590

17-23547
17-23548
17-23549
17-23550
17-23551
17-23552
17-23553
17-23554
17-23555
17-23556
17-23557
17-23558
17-23559
17-23560
17-23561
17-23562
17-23563
17-23564
17-23565
17-23566
17-23567
17-23568
17-23569
17-23570
17-23571
17-23572
17-23573
17-23574
17-23575
17-23576
17-23577
17-23578
17-23579
17-23580
17-23581
17-23582
17-23583
17-23584
17-23585
17-23586
17-23587
17-23588
17-23589
17-23590
17-23591
17-23592
17-23593
17-23594
17-23595
17-23596
17-23597
17-23598
17-23599
18-000

17-23547
17-23548
17-23549
17-23550
17-23551
17-23552
17-23553
17-23554
17-23555
17-23556
17-23557
17-23558
17-23559
17-23560
17-23561
17-23562
17-23563
17-23564
17-23565
17-23566
17-23567
17-23568
17-23569
17-23570
17-23571
17-23572
17-23573
17-23574
17-23575
17-23576
17-23577
17-23578
17-23579
17-23580
17-23581
17-23582
17-23583
17-23584
17-23585
17-23586
17-23587
17-23588
17-23589
17-23590
17-23591
17-23592
17-23593
17-23594
17-23595
17-23596
17-23597
17-23598
17-23599
18-000

17-23547
17-23548
17-23549
17-23550
17-23551
17-23552
17-23553
17-23554
17-23555
17-23556
17-23557
17-23558
17-23559
17-23560
17-23561
17-23562
17-23563
17-23564
17-23565
17-23566
17-23567
17-23568
17-23569
17-23570
17-23571
17-23572
17-23573
17-23574
17-23575
17-23576
17-23577
17-23578
17-23579
17-23580
17-23581
17-23582
17-23583
17-23584
17-23585
17-23586
17-23587
17-23588
17-23589
17-23590
17-23591
17-23592
17-23593
17-23594
17-23595
17-23596
17-23597
17-23598
17-23599
18-000

17-23547
17-23548
17-23549
17-23550
17-23551
17-23552
17-23553
17-23554
17-23555
17-23556
17-23557
17-23558
17-23559
17-23560
17-23561
17-23562
17-23563
17-23564
17-23565
17-23566
17-23567
17-23568
17-23569
17-23570
17-23571
17-23572
17-23573
17-23574
17-23575
17-23576
17-23577
17-23578
17-23579
17-23580
17-23581
17-23582
17-23583
17-23584
17-23585
17-23586
17-23587
17-23588
17-23589
17-23590
17-23591
17-23592
17-23593
17-23594
17-23595
17-23596
17-23597
17-23598
17-23599
18-000

17-23547
17-23548
17-23549
17-23550
17-23551
17-23552
17-23553
17-23554
17-23555
17-23556
17-23557
17-23558
17-23559
17-23560
17-23561
17-23562
17-23563
17-23564
17-23565
17-23566
17-23567
17-23568
17-23569
17-23570
17-23571
17-23572
17-23573
17-23574
17-23575
17-23576
17-23577
17-23578
17-23579
17-23580
17-23581
17-23582
17-23583
17-23584
17-23585
17-23586
17-23587
17-23588
17-23589
17-23590
17-23591
17-23592
17-23593
17-23594
17-23595
17-23596
17-23597
17-23598
17-23599
18-000

17-23547
17-23548
17-23549
17-23550
17-23551
17-23552
17-23553
17-23554
17-23555
17-23556
17-23557
17-23558
17-23559
17-23560
17-23561
17-23562
17-23563
17-23564
17-23565
17-23566
17-23567
17-23568
17-23569
17-23570
17-23571
17-23572
17-23573
17-23574
17-23575
17-23576
17-23577
17-23578
17-23579
17-23580
17-23581
17-23582
17-23583
17-23584
17-23585
17-23586
17-23587
17-23588
17-23589
17-23590
17-23591
17-23592
17-23593
17-23594
17-23595
17-23596
17-23597
17-23598
17-23599
18-000

17-23547
17-23548
17-23549
17-23550
17-23551
17-23552
17-23553
17-23554
17-23555
17-23556
17-23557
17-23558
17-23559
17-23560
17-2